

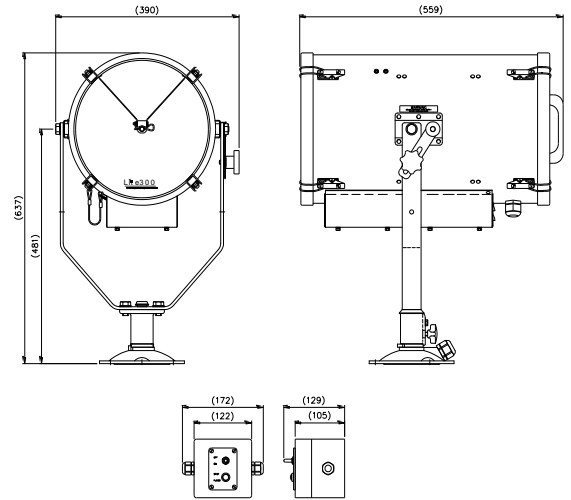


LX300 Issue 3
Xenon 300 w
Manual Control

APPLICATION

THE HIGH PERFORMANCE FRANCIS LX range of searchlights incorporate the design features required to successfully operate searchlights in the most demanding product operating environments on land and sea.

Within the Francis Lite range of marine searchlights, the LX300, utilising a 300w xenon lamp, has been designed to give maximum beam range and candlepower, which DC incandescent halogen lamps are unable to achieve. Having the ability to identify objects and potential dangers from a far greater distance, the LX300 can prevent both vessel and lives being put to risk. As an optional extra, this unit is also available with infra-red night vision ensuring total covert surveillance



SPECIFICATION

- Immediate full lamp brilliance from switch on.
- Instant re-strike. No "cooling" down time required.
- Toughened front glass.
- Parabolic aluminium reflector.
- Economical 600 hour lamp life.
- Constructed from stainless steel with stove enamel paint finish
- Operational temperature -50°C.
- Vertical movement +25° to - 25° (Cabin/Cabin Ped).
- Vertical movement +40° to - 40° (Deck/Deck Ped).
- Impressive 450° rotation.
- Sealing - IP66 Searchlight, IP44 PSU & Control unit IP64
- Searchlight weight deck 17 Kgs, PSU weight 11kgs
- Under deck mechanism 2.3Kgs.
- Range 3479m
- Peak Beam Candle Power 12.1 million
- Optional infra red filter
- Lamp part number D21908

All dimensions in Millimeters

BASE FIXING DETAILS:

4 HOLES 11 DIA EQUI-SPACED ON A 154mm PCD.
Cabin Centre hole 75mm

| Type | Supply | Watts | Part No |
|-------|--------|-------|---------|
| LX300 | 240 V | 300 w | A2491 |
| LX300 | 115 V | 300 w | A6080 |

Cabin Control assembly - C23175-001

Francis Searchlights Limited
Union Road, Bolton, BL2 2HJ, UK
Tel 44 (0) 1204 558960 Fax 44 (0) 1204 558979
Email sales@francis.co.uk Web site www.francis.co.uk

For more information contact: