



FX560RC Issue 6
Xenon 1Kw - Remote
Control, Variable Speed

APPLICATION

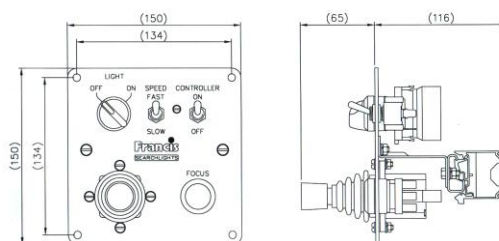
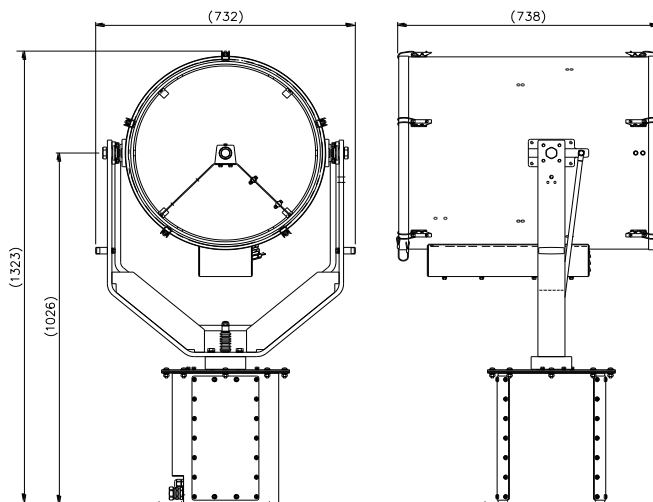
The FRANCIS FX Premium range of variable speed Remote Controlled Searchlights incorporate the design features required to successfully operate searchlights in the most demanding product operating environments on land and sea.

Francis Searchlights have redesigned and improved the remote controlled Xenon Searchlight still further by adding full variable speed as a standard option at no extra cost.

With the "colour temperature" of the Xenon lamp being equal to that of "sunlight" the searchlight is ideal for spotting dangers to navigation in the Polar Regions, such as low-lying icebergs. Other potential hazards, such as debris and small craft, are easily spotted at long range allowing sufficient time for action to be taken.

SPECIFICATION

- Immediate full lamp brilliance from switch on.
- Instant re-strike. No "cooling" down time required.
- Toughened front glass.
- Parabolic glass reflector.
- Economical 3000 hour lamp life. Lamp Part no. D21229
- Constructed from marine grade materials & fixings.
- Stove enamel paint finish.
- Remote pan rotation 385°.
- Remote elevation control $\pm 20^\circ$.
- Full variable speed gearbox 1 - 20°/sec (Pan) 1 - 10°/sec (Tilt).
- Operational temperature -50°C.
- Adjustable lamp focus, 1.5° spot to 10° flood.
- Remote focus fitted as standard.
- Well proven and reliable power supply unit suitable for 50/60 Hz 1ph power supplies.
- Sealing – IP66 Gearbox, IP56 Searchlight, IP20 PSU
- Supplied with new compact variable speed joystick control panel.
- **Power supply weight 56 Kgs.**
- **Searchlight weight 66 Kgs.**
- **Range 9003 metres.**
- **Peak Beam Candle Power 81 million.**



All dimensions in Millimeters

BASE FIXING DETAILS:
 4 HOLES 12.5 DIA EQUI-SPACED
 ON A 350mm PCD

Dispatch Numbers

Type	Supply	Watts	Part No
FX560RC	240v	1000w	A2479
FX560RC	115v	1000w	A2484

PSU dimensions : 600 X 273 X 245mm
 Fixing dimensions : 450 X 180mm

For more information contact:

Francis Searchlights Limited
 Union Road, Bolton, BL2 2HJ, UK
 Tel 44 (0) 1204 558960 Fax 44 (0) 1204 558969
 Email sales@francis.co.uk Web site www.francis.co.uk