



**FH560RC 2500w Iss 3  
Metal Halide Remote  
Control, Variable Speed**

**APPLICATION**

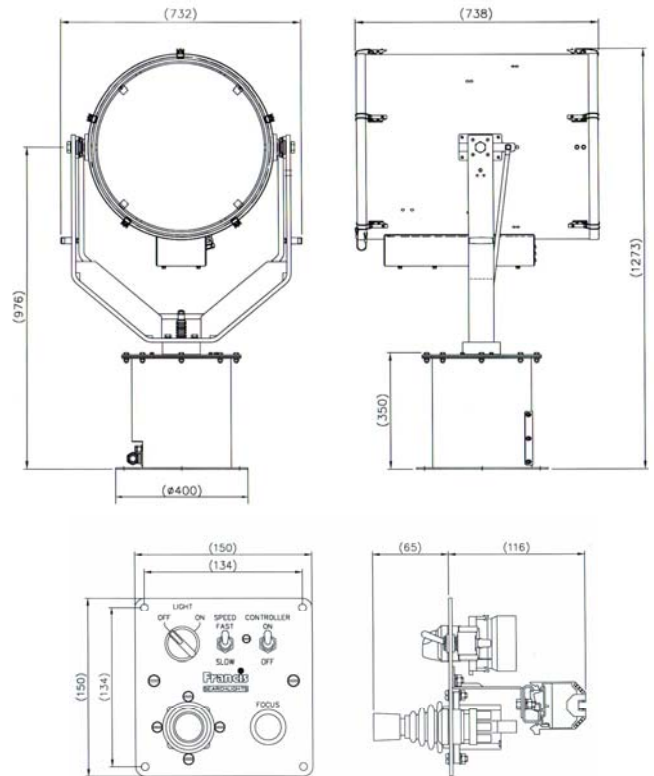
The new FRANCIS FH range of variable speed Remote Controlled Searchlights incorporate the design features required to successfully operate searchlights in the most demanding product operating environments on land and sea. These Metal Halide Searchlights are exceptionally powerful and offer light output and performance similar to the more expensive Xenon range.

Francis Searchlights have redesigned and improved the remote controlled Metal Halide Searchlight still further by adding full variable speed as a standard option at no extra cost.

The exceptional power achieved with the light source is ideal for spotting dangers to navigation in the Polar Regions. Such as low-lying icebergs. Other potential hazards, such as debris and small craft, are easily spotted at long range allowing sufficient time for action to be taken.

**SPECIFICATION**

- Toughened front glass.
- Parabolic glass reflector.
- Economical 600 hour lamp life.
- Constructed from marine grade materials & fixings.
- Stove enamel paint finish.
- Remote pan rotation 385°.
- Remote elevation control  $\pm 25^\circ$ .
- Full variable speed gearbox 1 - 20°/sec (Pan) 1 - 10°/sec Tilt).
- Operational temperature -50°C.
- Adjustable lamp focus, 3 - 10° flood.
- Remote focus fitted as standard.
- Well proven and reliable power supply unit suitable for 50/60 Hz 1ph power supplies.
- Sealing – IP66 Gearbox, IP56 Searchlight, IP32 PSU
- Supplied with variable speed new compact joystick control panel.
- **Power supply weight 30 Kgs.**
- **Searchlight weight 68 Kgs.**



All dimensions in Millimetres

**BASE FIXING DETAILS:**  
4 HOLES 12.5 DIA EQUI-SPACED  
ON A 350mm PCD

PSU dimensions : 355 X 170 X 401 mm

Type	Supply	Watts	Part No
FH560RC	240v	2500w	A2475
<b>FH560RC</b>	<b>115v</b>	<b>2500w</b>	<b>A2477</b>

Voltage	Lamp life	Range	PBCP	Div	Watt	Lamp	Lamp Part No.
240v	600 hrs	11,870	141 mil	3.0	2500	G38	20194

For more information contact:

**Francis Searchlights Limited**  
Union Road, Bolton, BL2 2HJ, UK  
Tel 44 (0) 1204 58960 Fax 44 (0) 1204 558979  
Email sales@francis.co.uk Web site www.francis.co.uk